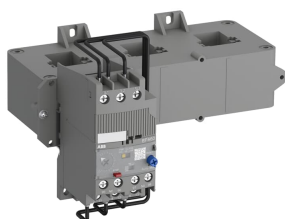


PRODUCT-DETAILS

EF460-500

EF460-500 Electronic Overload Relay



General Information

Extended Product Type	EF460-500
Product ID	1SAX721001R1101
EAN	4013614487415
Catalog Description	EF460-500 Electronic Overload Relay

Long Description

The EF460-500 is an self-supplied electronic overload relay, which means no extra external supply is needed. It offers reliable and fast protection for motors in the event of overload or phase failure. Easy to use like a thermal overload relay and compatible with standard motor applications, the electronic overload relay is convincing, above all, due to its wide setting range, high accuracy, high operational temperature range and the possibility to select a trip class (10E, 20E, 30E). Further features are the temperature compensation, trip contact (NC), signal contact (NO), automatic- or manual reset selectable, trip-free mechanism, STOP- and Test function and a trip indication. EF460 has ATEX and IECEx certification 1)

1) ATEX is valid for products produced from week 42, 2014.
IECEx is valid for products produced from week 15, 2017.

Ordering

Minimum Order Quantity	1 piece
Customs Tariff Number	85364900

Popular Downloads

Data Sheet, Technical Information	2CDC107045D0201
-----------------------------------	-----------------

Instructions and Manuals	2CDC107033M6803
Instructions and Manuals (Part 2)	2CDC107043M6801
Time-Current Characteristic Curve	1SAX100509F0001 1SAX100510F0001
Dimension Diagram	1SAX700402F0001

Dimensions

Product Net Width	186 mm
Product Net Height	103.5 mm
Product Net Depth / Length	152.13 mm
Product Net Weight	1.182 kg

Technical

Setting Range	150 ... 500 A
Rated Operational Voltage	Auxiliary Circuit 600 V AC/DC Main Circuit 1000 V AC
Rated Operational Current (I_e)	500 A
Rated Frequency (f)	Auxiliary Circuit 50 Hz Auxiliary Circuit 60 Hz Auxiliary Circuit DC Main Circuit 50 Hz Main Circuit 60 Hz
Rated Impulse Withstand Voltage (U_{imp})	Auxiliary Circuit 6 kV Main Circuit 8 kV
Rated Insulation Voltage (U_i)	1000 V
Number of Poles	3
Number of Auxiliary Contacts NC	1
Number of Auxiliary Contacts NO	1
Number of Protected Poles	3
Conventional Free-air Thermal Current (I_{th})	Auxiliary Circuit NC 6 A Auxiliary Circuit NO 6 A
Rated Operational Current AC-15 (I_e)	(240 V) NC 3 A (240 V) NO 3 A (400 V) NC 1.1 A (400 V) NO 1.1 A (500 V) NC 0.75 A (500 V) NO 0.75 A
Rated Operational Current DC-13 (I_e)	(125 V) NC 0.55 A (125 V) NO 0.5 A (24 V) NC 1.5 A (24 V) NO 1.5 A (250 V) NC 0.27 A (250 V) NO 0.27 A (60 V) NC 0.55 A (60 V) NO 0.55 A
Degree of Protection	Housing IP20 Main Circuit Terminals IP00
Pollution Degree	3
Connecting Capacity Auxiliary Circuit	Flexible with Ferrule 1/2x 0.75 ... 2.5 mm ² Flexible with Insulated Ferrule 1/2x 0.75 ... 2.5 mm ² Flexible 1/2x 0.75 ... 2.5 mm ² Rigid 1/2x 1 ... 4 mm ²
Tightening Torque	Auxiliary Circuit 0.8 ... 1.2 N·m

Wire Stripping Length	Auxiliary Circuit 9 mm
Recommended Screw Driver	Auxiliary Circuit Pozidriv 2
Mounting Position	1 ... 6
Suitable For	AF400 AF460
Standards	IEC/EN 60947-1 IEC/EN 60947-4-1 IEC/EN 60947-5-1 UL 60947-1 UL 60947-4-1

Technical UL/CSA

Maximum Operating Voltage UL/CSA	Main Circuit 600 V AC
Contact Rating UL/CSA	(NC:) B600 (NC:) Q600 (NO:) B600 (NO:) Q600
Connecting Capacity Auxiliary Circuit UL/CSA	Flexible 1/2x 16-10 AWG Stranded 1/2x 18-10 AWG
Tightening Torque UL/CSA	Auxiliary Circuit 7 ... 1 in·lb

Environmental

Ambient Air Temperature	Operation -25 ... +70 °C Operation Compensated -25 ... +70 °C Storage -25 ... +70 °C
Ambient Air Temperature Compensation	Yes
Maximum Operating Altitude Permissible	2000 m
Resistance to Shock acc. to IEC 60068-2-27	11 ms Pulse 25g
Resistance to Vibrations acc. to IEC 60068-2-6	3g / 3 ... 150 Hz
RoHS Status	Following EU Directive 2011/65/EU and Amendment 2015/863 July 22, 2019

Certificates and Declarations (Document Number)

ABS Certificate	1SAA941002-0102
ATEX Certificate	1SAA941004-3901
BV Certificate	1SAA941002-0201
CB Certificate	1SAA942009-2001
CCS Certificate	1SAA941001-0901
CQC Certificate	CQC2012010309537805
Declaration of Conformity - CCC	2020980309000290
Declaration of Conformity - CE	1SAD938519-0180
Declaration of Conformity - UKCA	1SAD938502-1180
DNV Certificate	1SAA941003-0302
EAC Certificate	1SAA941003-2701
Environmental Information	1SAC200103H0001
IECEX Certificate	1SAA941000-4001
Instructions and	2CDC107033M6803

Manuals

Instructions and Manuals (Part 2)	2CDC107043M6801
LR Certificate	1SAA941002-0501
RINA Certificate	RINA_ELE376813CS
RMRS Certificate	1SAA941001-0701
RoHS Information	1SAD938519-0180
Time-Current Characteristic Curve	1SAX100509F0001 1SAX100510F0001
UL Certificate	E48139-19990512

Container Information

Package Level 1 Units	1 piece
Package Level 1 Width	140 mm
Package Level 1 Height	199 mm
Package Level 1 Depth / Length	195 mm
Package Level 1 Gross Weight	1.554 kg
Package Level 1 EAN	4013614487415

Classifications

Object Classification Code	F
ETIM 4	EC001080 - Electronic overload relay
ETIM 5	EC001080 - Electronic overload relay
ETIM 6	EC001080 - Electronic overload relay
ETIM 7	EC001080 - Electronic overload relay
ETIM 8	EC001080 - Electronic overload relay
eClass	V11.0 : 27371502
UNSPSC	39121520
IDEA Granular Category Code (IGCC)	5364 >> Overload relay
E-Number (Finland)	3707463
E-Number (Sweden)	3210294

Accessories

Identifier	Description	Type	Quantity	Unit Of Measure
1SAX701904R0002	LT460EF Terminal Shroud	LT460EF	1	piece
1SAX701902R1011	DT500/AF460-S Mounting Kit	DT500/AF460-S	1	piece
1SAX701902R1001	DT500/AF460-L Mounting Kit	DT500/AF460-L	1	piece
1SAX101911R1001	DRS-F-01 Remote Reset Coil	DRS-F-01	1	piece
1SAX101911R1002	DRS-F-02 Remote Reset Coil	DRS-F-02	1	piece
1SAX101911R1003	DRS-F-03 Remote Reset Coil	DRS-F-03	1	piece
1SAX101911R1004	DRS-F-04 Remote Reset Coil	DRS-F-04	1	piece
1SAX101911R1011	DRS-F-EF-01 Remote Coil	DRS-F-EF-01	1	piece
1SAX101911R1012	DRS-F-EF-02 Remote Coil	DRS-F-EF-02	1	piece
1SAX101911R1013	DRS-F-EF-03 Remote Coil	DRS-F-EF-03	1	piece
1SAX101911R1014	DRS-F-EF-04 Remote Coil	DRS-F-EF-04	1	piece
1SAZ701903R1001	WRH-F Holder	WRH-F	1	piece
1SAZ701903R1011	WRB-400 Bowden Wire	WRB-400	1	piece
1SAZ701903R1012	WRB-600 Bowden Wire	WRB-600	1	piece
1SAZ701903R1013	WRB-1000 Bowden Wire	WRB-1000	1	piece
1SAZ701903R1030	WRBG Gasket	WRBG	1	piece
1SFA616162R1014	KPR3-101L Reset push button	KPR-101L	1	piece

Categories

Low Voltage Products and Systems → Control Products → Contactors → Electronic Overload Relays

Drives → Services → Spares and Consumables → Parts

